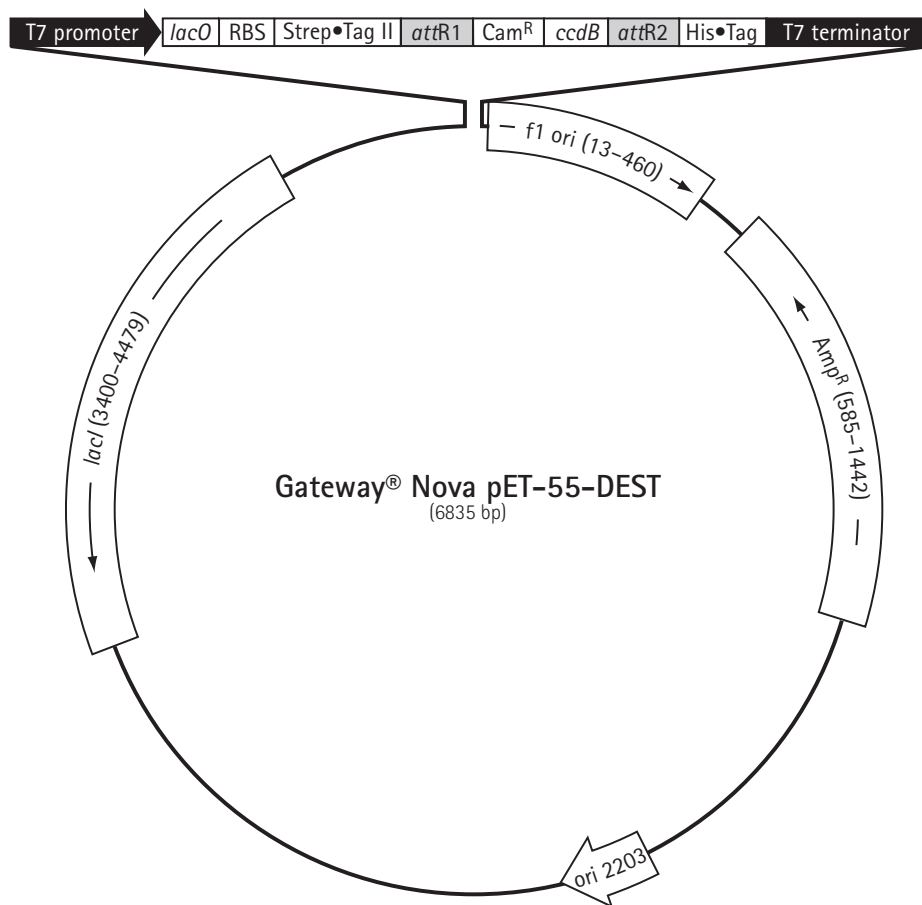


The Gateway® Nova pET-55-DEST™ vector is designed to create expression clones (pEXPR) that are fused to an N-terminal Strep•Tag® II (Skerra 2000) coding sequence. If the pENTR clone lacks a stop codon and is appropriately designed for a C-terminal fusion, the target gene in the resulting pEXPR clone will also be fused to a C-terminal His•Tag® coding sequence (Fiedler 2002). The presence of "gentle elution" tags at both the N- and C-termini is ideal for dual purification strategies designed to isolate full-length fusion proteins (Fiedler 2002).

Fiedler, M. et al. 2002. *Protein Eng.* 15, 931.

Skerra, A. and Schmidt, T.G.M. 2000. *Meth. Enzymol.* 326, 271.

Feature	Location	Cat No.
Gateway® Nova pET-55-DEST™ DNA		71846-3
f1 origin	13-460	
Amp ^R	585-1442	
pBR322 ori	2203	
<i>lacI</i> coding sequence	3400-4479	
T7 promoter	4870-4886	
T7 transcription start	4887	
Strep•Tag® II coding sequence	4966-4989	
<i>attR1</i>	4999-5123	
Cam ^R	5232-5888	
<i>ccdB</i>	6233-6535	
<i>attR2</i>	6579-6703	
His•Tag® coding sequence	6705-6722	
T7 terminator	6763-6810	



USA and Canada

Tel (800) 526-7319
novatech@novagen.com

France
Freephone
0800 126 461

Germany
Freecall
0800 100 3496

Ireland
Toll Free
1800 409 445

United Kingdom
Freephone
0800 622 935

All other
European Countries
+44 115 943 0840

All Other Countries

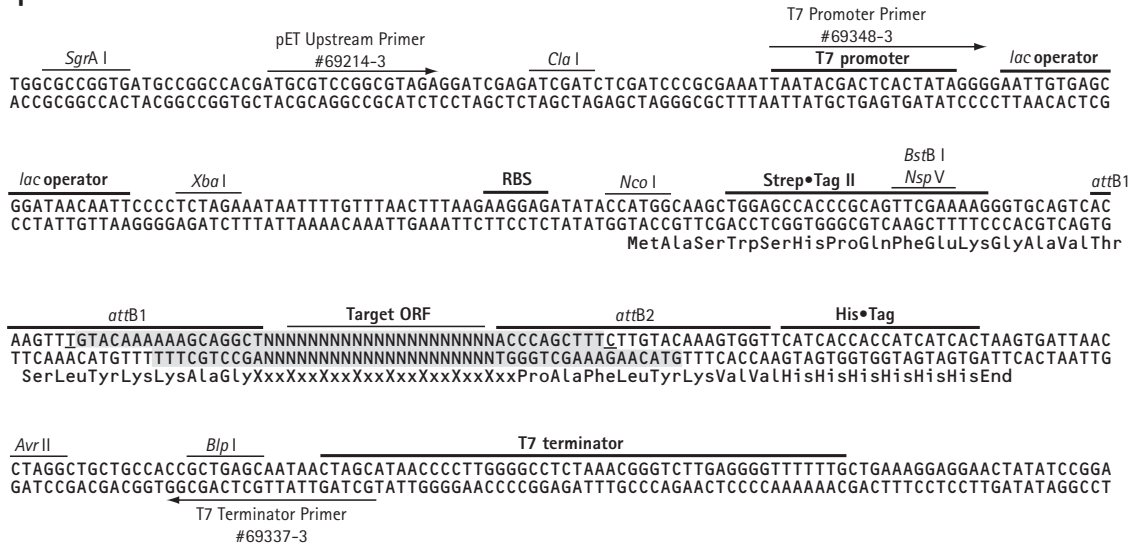
Contact Your Local Distributor
www.novagen.com
novatech@novagen.com

techservice@merckbio.eu

www.novagen.com

FOR RESEARCH USE ONLY. NOT FOR HUMAN OR DIAGNOSTIC USE.

Sequence of pEXPR derivative



The DNA sequence shown above represents a pEXPR clone derived from a Clonase® LR reaction between a pENTR clone and Gateway® Nova pET-55-DEST™. The Cam^R and *ccdB* genes between the original *attR1* and *attR2* regions of this DEST vector are replaced by the target gene from the pENTR clone during the recombination reaction between the *attR* and *attL* sequences. The open reading frame, fusion tags, and *attB* sites of the resulting pEXPR recombinant are detailed. The shaded regions correspond to those DNA sequences transferred from the entry clone into the DEST vector and the non-shaded regions are derived from the DEST vector. The underlined nucleotides flanking the shaded region correspond to bases 5006 and 6689 of the original Gateway Nova pET-55-DEST vector

Restriction sites in Gateway® Nova pET-55-DEST™

Enzyme	# Sites	Locations	Enzyme	# Sites	Locations	Enzyme	# Sites	Locations
AceIII	9	399 955 2309 2611 2752	BspEI	3	3072 5442 6830	NotI	1	5126
AclI	6	3299 3630 4358 5461	BspHI	4	1460 1492 1541 4727	NspV	1	4983
AfeI	2	456 882 1255 2938 4465	BspLU111	1	2261	PciI	1	2261
AhdI	1	5533	BspMI	1	6561	PfiMI	2	4550 5678
Alol	1	3011 4724	BsrBI	4	99 1498 2332 4900	Ppil	3	282 1288 1555
AlwNI	2	656	BsrDI	5	717 891 3718 4084 5465	Psil	1	371
ApaBI	1	282	BsrGI	3	5007 6290 6692	Psp1406I	6	456 882 1255 2938 4465
Apal	1	1852 6225	BssHII	2	3714 5940			5533
ApaLI	5	4450	BssSI	2	1320 2088	PspOMI	1	3918
AseI	4	3922	Bst1107I	2	2494 5981	PstI	1	6572
AvrII	1	1323 1947 2447 4145 6346	BstAPI	1	4449	PvuI	1	1026
BamHI	2	828 3383 3442 4870	BstBI	1	4983	PvuII	4	2674 3436 3529 5346
BclI	1	6735	BstEII	1	3943	RcaI	4	1460 1492 1541 4727
BclII	1	5196 5899	BstXI	4	4079 4202 4331 6434	Sall	1	6574
BclIII	1	3490 4672 4786 4807	BstZ17I	2	2494 5981	SapI	1	2378
BclIV	1	3148 3635 3974	BtrI	1	6351	Scal	2	1136 5863
BclV	1	3143 3640 3979	BtsI	4	1056 1076 3398 3766	SfoI	4	3488 4670 4784 4805
BclVI	1	6171	CjeI	15		SgrAI	1	4806
BclVII	1	1195 2690 3805 5007	CjePI	12		SmaI	1	6317
BclVIII	1	1494 2063 3673	ClaI	1	4850	SphI	1	4658
BclIX	1	4111	DraI	5	522 541 1233 5366 5705	SrfI	1	6317
BclX	1	776	DraIII	2	246 6726	SspI	2	451 5758
BclXI	1	6572	DrdI	3	290 2159 2574	TaqII	5	341 1004 1189 2365 3332
BclXII	1	6753	EagI	1	5126	Tth1111	1	2519
BclXIII	1	6351	EarI	3	1451 2378 4508	VspI	4	828 3383 3442 4870
BclXIV	1	696 2527 3327 3967 4204	EciI	4	799 2059 2205 4340	XbaI	1	4917
BclXV	1	4601	Eco47III	2	3011 4724	XcmI	3	3740 3758 4274
BclXVI	1	726 2740 3804 4293 4987	Eco57I	2	1323 1719	XmaI	1	6315
BclXVII	1	5568	EcoNI	1	4593	XmnI	2	1255 2707
BclXVIII	1	3156 5219 6171	EcoRI	1	5446			
BclXIX	1	1261 1637 1878 2176 3317	EheI	4	3488 4670 4784 4805			
BclXX	1	6045 6817	FspI	1	878			
BclXXI	1	3068 4846 4856 6330	HpaI	1	3623			
BclXXII	1	717	KasI	4	3486 4668 4782 4803			
BclXXIII	1	282 3457	MluI	2	4125 5893			
BclXXIV	2	1957 3591 3726	MscI	3	5713 6342 6438			
BclXXV	2	3107 4080 4280 5013	Nael	2	140 4817			
BclXXVI	3	2620 3510 5670	NarI	4	3487 4669 4783 4804			
BclXXVII	2	5439 5846	NcoI	1	4956			
BclXXVIII	2	1567 1745 3959 4293 4812	NgoAIV	2	138 4815			
BclXXIX	2	6335	NgoMIV	2	138 4815			

Enzymes that do not cut:		AarI	AatII	Acc65I
AceII	AfiII	AgeI	AleI	AscI
BaeI	BfrBI	BglII	BpII	BseRI
Bsu36I	Ecl136II	EcoCRI	EcoRV	FalI
FspAI	HindIII	KpnI	MfeI	MunI
NheI	NruI	NsiI	Pacl	PinAI
PmlI	Ppu10I	PshAI	Psrl	RleAI
SacI	SacII	SanDI	SbfI	Scil
SfiI	Sgfl	SnaBI	SpeI	Sse232I
Sse8647I	Stul	SunI	Swal	XhoI
				ZraI